



CHURCHES OF CHRIST MODBURY INC.

955 North East Road, Modbury SA 5092

Telephone: 08 8396 4141

Website: www.modbury.org.au

Enquires: Linda Willis (Lead Elder)

Mobile: 0439808876

Email: lindaw_mcofc@adam.com.au



CHURCHES OF CHRIST MODBURY INC.

Our Core Values

Christ-Centredness

We acknowledge that Jesus Christ is the head of our church and submit ourselves to a life of faith and obedience under Christ's saving Lordship. ". . . faith working through love." Galatians 5:6 (Ephesians 1:22-23, 2:8-10)

The Bible

We believe in the integrity and authority of the Bible as the written word of God inspired by the Holy Spirit. It is our guidebook for daily living. We seek to understand and apply its truths in a way that ministers grace and urges obedience. (2 Timothy 3:16; James 1:23-25)

Prayer

We believe that God hears and answers our personal as well as corporate praise and requests for healing, help and guidance. Therefore, we believe that prayer is foundational and so undergirds all of our ministries and activities. (Matthew 7:7-11; James 5:13-18)

Unconditional Love.

In response to God's unconditional love towards us we care for others, showing love, acceptance and forgiveness; and we endeavour to be open, accessible and approachable, and embrace all who are seeking God. (John 13:34-35; Matthew 5:44; Colossians 3:12-14; 1 Corinthians 9:19-23)

Worshipping God

Worship is a lifestyle that acknowledges God's supremacy in our personal lives as well as in our gatherings as a community of faith. Corporately we seek to be relevant and authentic, worshipping in spirit and in truth. (Romans 12:1-2; Psalm 100:1-5; John 4:23-24)

An Outward Focus

Responding to the saving grace of God we seek to honour Christ's call, and to spread the good news that Jesus Christ is Lord, and about what he has done for us by sharing this truth with people who do not know him. As part of this response we are committed to meeting the physical, spiritual and emotional needs of people in our local community and beyond. (Matthew 28:19-20; John 14:6; Acts 4:12; Luke 4:17-19; James 1:27)

Christian Community and Ministering to One Another

We believe that church community is the best place for people to grow in their faith, to exercise their gifts, to worship, to be cared for and to care for others. We seek to serve by being generous stewards of our gifts, time and money, and we seek to discover and use the Spiritual Gifts that God has entrusted to us to encourage and build up each other for the benefit of our community. (Acts 2: 44-47; Ephesians 4:29-32; Hebrews 10:24-25)

Biblical Leadership

We seek to be empowered by the Holy Spirit and enabled by the leaders of our community of faith as we participate in ministry. We embrace a leadership that is forward thinking, creative, and flexible, who through sound planning develop effective strategies which they clearly communicate to the people that they lead. (Acts 6:2-5; Ephesians 4:11-13)

Organisational Structure of the Church

The fundamental principle underpinning the Church's organisational structure is that Christ is the head of the body, the Church.

The Church elect up to 6 Elders to provide spiritual oversight and leadership for the church, an Administrator to oversee all administrative matters and a Finance Team Leader to oversee all finance related matters. The positions are for an initial period of 3 years with a further possible term of 3 years subject to election.

The Elders oversee the appointment of all Auxiliary Leaders and Life Group leaders on an annual basis.

The Church Planning Council comprises the Elders, the Administrator, the Finance Team Leader and up to two Church Representatives.

Our Current Leadership Team

Intentional Interim Ministry Team Leader Ross Pelling

Elders
Linda Willis (Lead Elder)
Cliff Beale
David Lockwood
Ruth Brogan
Michelle Leue
Margaret Johansson

Administrator Kevin Martin

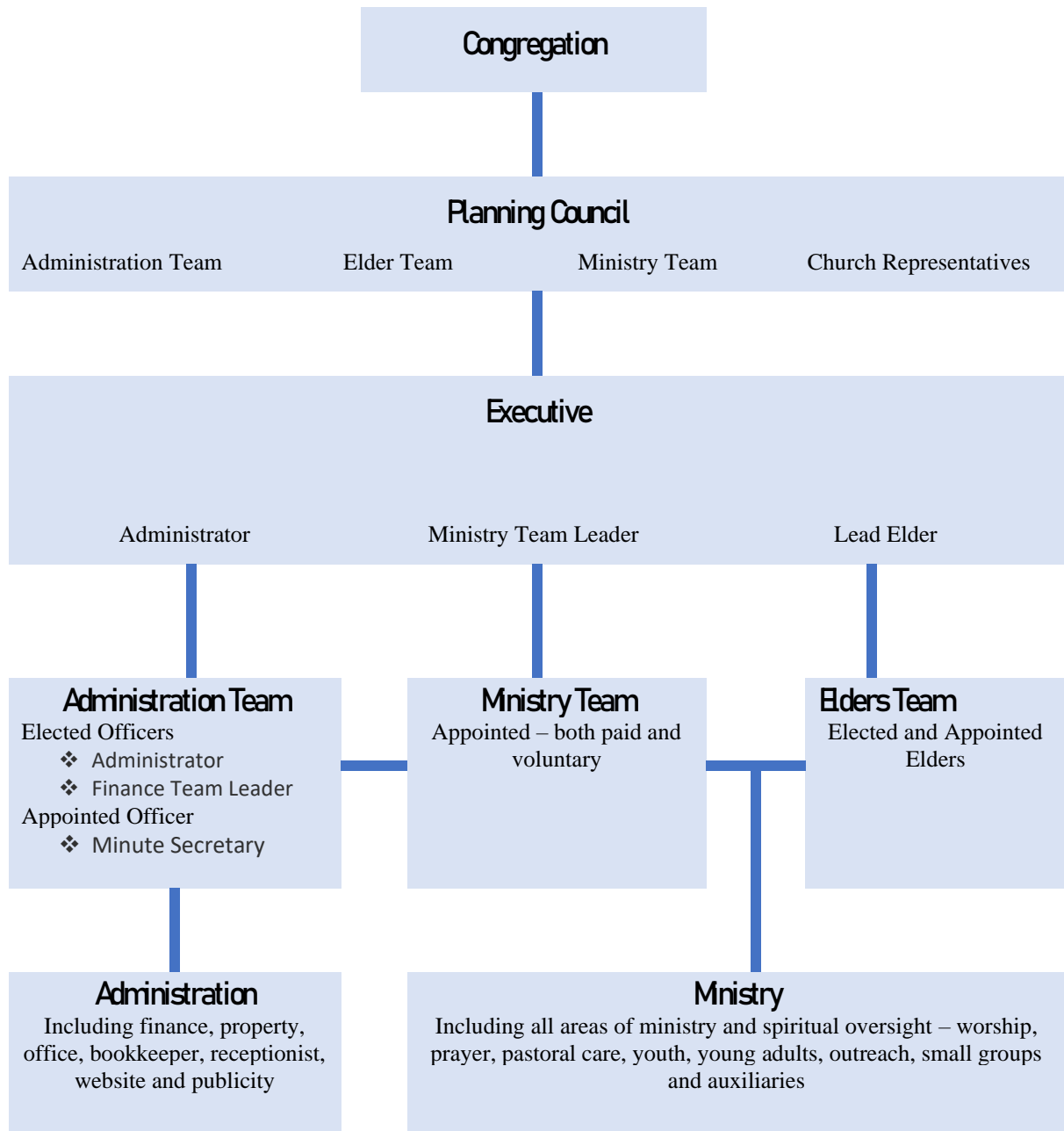
Finance Team Leader David Fletcher

Church Representative Carole-Anne Fooks

Churches of Christ, Moadbury Inc.

Current Governance Structure

*The fundamental principle underpinning this Structure is that Christ is the head of the body, the Church.
Colossians 1: 18, 24*





CHURCHES OF CHRIST MODBURY INC.

VISION AND MISSION

This year we celebrate 60 years of being Churches of Christ Modbury. Through many highs and lows, God has sustained us.

Over the past 16 months we have embarked upon an Intentional Interim Ministry process. As a result of this process, God has led us to a fresh vision and mission for the church

We acknowledge our God-given strengths:

- Relationships of Love, acceptance, care, and inclusiveness of all.
- A willingness to participate by serving in a committed manner- expressed in a high percentage of involvement in church activity and outreach.
- A heart to include the wider Modbury community in those relationships through service, outreach, and care.
- A strong participation in Life groups and other groups which allow for Christian growth and outreach.
- An openness to diverse ways of expressing God's love and a desire for all to know Him.
- A desire to restore the age imbalance across our congregation.
- Worship that is uplifting- with a particular focus on the sharing of our stories and celebration of our faith.
- A desire for the church to grow- exploring new and diverse ways of being church today.

OUR VISION

Our God-inspired vision is that of being an oasis in the midst of an urban desert

- A peaceful place where people can find refuge, care, hope and guidance;
- A constantly renewing, Holy Spirit -led congregation rediscovering the heart of God for the lost;
- An equipping Christian community that releases people to serve and reach out to others

In Christ.

OUR MISSION

In humble dependence upon God's power and empowering, in faith we the Elders affirm that the following are the key things God is wanting for us going forward.

Recognising that we can't do and be everything to everybody, these are the things we can do and be:

1. To be a positive, inviting and growing community for people of all backgrounds, with a particular focus on those who are approaching or in retirement and senior stages of life;
2. To be a welcoming and innovative Christian community that reaches out to the socially isolated in our district with hope and care -providing a sense of home and belonging in Christ;
3. To build a Christian community that reaches out to and welcomes international newcomers to our district, leading them to Christ and incorporating them into our church, with a particular focus on families;
4. To develop as a positive, networking local church among TTG local churches, working collaboratively to serve the wider growing needs of our Modbury/TTG area;
5. In time to become a regional Ministry Centre for Churches of Christ SA through the utilisation of our NE road site as a base for a number of wider Christian services and agencies.

As a result, our next steps are:

1. Build a new ministry Team of:

Ministries Team Leader

An experienced Minister/Pastor who can lead us by primarily:

- Equipping the congregation to serve and reach out to others
- Modelling how to lead people to faith in Jesus
- Creatively developing ministry and mission to over 50s
- Being a people person, connecting to people from diverse backgrounds.

Urban Missionary

A specialist person who can reach out to those in our community:

- Equipping creative connections with International people
- Connecting personally to international students, couples and families
- Able to lead such people to faith in Jesus
- Incorporating them into our church family.

2. Build a "Community Advisory Hub":

This would be a referral and advisory centre for people in need:

- Networking the many Christian welfare and community services in our area
- Helping people to access government and community organisation programmes and assistance
- Led by specially trained volunteers from our church.

The Church Facility

The area on the northern side of the church is a flat grassed area used for parking in times of busier use. This area has two regular sized sheds on the north-west boundary.

The church complex includes a chapel, a hall, a foyer area, a kitchen, and a reception area with two fully enclosed offices and two work/storage areas attached, and a mezzanine used mainly for meetings. The office area is equipped with computers, printers and a photocopier. The church office is open Tuesday and Wednesday 10.00 am – 2.00 pm and is staffed by one voluntary receptionist/office coordinator during those hours.

Worship Services

Worship services are currently held at 10.00 am on Sundays

The morning service is a mix of modern and traditional worship with an aim to relate to all ages.

YEAR	MEMBERS	OTHER REGULAR ATTENDERS	AVERAGE ATTENDANCE	
2019	90	23	Sunday a.m.	68
2020	83	18	Sunday a.m.	75
2021	73	16	Sunday a.m.	55

The last 18 months has seen attendance varied because of Covid-19, lockdowns and the introduction of live streaming.

Members Profile

There are a large proportion of active retired persons in this congregation, including a significant group who live in Lifestyle villages. The congregation has a number of single people.

An analysis of members' birth dates from church records, undertaken in 2019, yielded the following Generations Profile

GENERATION LABEL	BORN IN	AGE GROUP	TOTAL	%
BUILDER	1945 or earlier	74 years+	35	38%
BOOMER	1946 -1961	58 – 73 years	40	45%
GENX	1962 – 1979	40 – 57 years	7	8%
GEN Y	1980 – 1994	25 – 39 years	6	7%
GEN Z	1995 – 2001	18 – 24 years	2	2%
CHILDREN	2002+	17 years or less	2	2%

Groups and Activities

The church has a number of active auxiliary groups. The following are currently operating and others are in recess because of Covid-19 restrictions

CHAT (Craft and social activity, meets on Tuesday mornings during school terms)

Craft Fair (Major annual community event held on one Saturday early in May)

Car Boot Sale (bi-annual community event held in October)

GEMS (Social events for women, with meetings five times a year)

Thrift Shop (Operates in church premises on Wednesday and Thursday mornings during school terms)

Modbury Youth (Youth and young adults' activities), now combined with Magill Church of Christ

Life Groups (Seven Small Groups meeting weekly or fortnightly)

Membership Criteria

We acknowledge as members of this church, all those who claim Jesus Christ as Saviour and Lord of their lives, and who are recognised by the elders to be active in the life of the church.

The elders shall maintain a roll of members, which shall be revised quarterly. New members if they desire to be so recognised may be publicly received into membership at a worship service or other meeting of the church.

Active Members are:

Members who have not absented themselves from corporate worship around the Lord's table here at Modbury for more than 12 consecutive Sundays, and who demonstrate their commitment to Christ, his body, and his mission, in accordance with clause 2 of the Constitution.

Inactive Members are:

Members who have absented themselves from corporate worship around the Lord's table here at Modbury for more than 12 consecutive Sundays.

Isolated Members are:

Members who are under the pastoral oversight of this congregation and who are unable to attend the corporate worship around the Lord's Table here at Modbury. In consideration of the pastoral situation and informed awareness of such isolated members, the Elders may determine isolated members to be active or inactive for the purpose of their participation in voting at general or special meetings of the Church. The Elders will also have responsibility for informing such members accordingly.